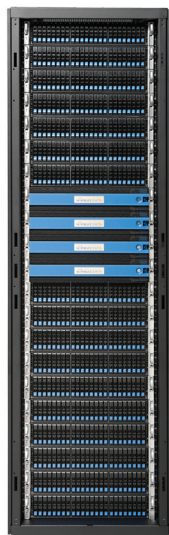


# Sustainable Storage<sup>®</sup> Platforms

Memory-based multiprotocol storage systems for virtualization, databases, HPC, and cloud infrastructure

## E-Class (enterprise and efficiency)

## S-Class (speed and simplicity)



10 - 500 TB (up to 10 TB per U)

2.5 - 100 TB (up to 5 TB per U)

Distributed Cache Architecture (DCA)

Parallel Performance Architecture (PPA)

iSCSI, NFS, FCP, SRP, CIFS

iSCSI, NFS, FCP, SRP, CIFS

No single-point-of-failure, live software updates

All-in-one system, 20 minute deployment

Up to 800,000 IOps and 8.0 GB/sec

Up to 800,000 IOps and 8.0 GB/sec

EMLC flash (30,000 P/E cycles) with 28% reserve

EMLC flash (30,000 P/E cycles) with 28% reserve

RAID protection, hot-swap components

RAID protection, hot-swap components

Ethernet (Gb/10Gb/40Gb), FC (4/8 Gb), IB (QDR/FDR)

Ethernet (Gb/10Gb/40Gb), FC (4/8 Gb), IB (QDR/FDR)

\$10/GB + controllers + IO modules

\$10/GB + IO modules